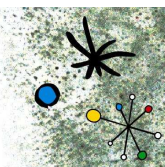




International Society for
Environmental Epidemiology

September, 13th-16th 2011

Palau de Congressos de Barcelona - Fira de Barcelona



Topics

- * Air pollution (outdoor) and cardiovascular disease
- * Air pollution (outdoor) and gene-environment interactions
- * Air pollution (outdoor) and neurobehavioural effects
- * Air pollution (outdoor) and other outcomes
- * Air pollution (outdoor) and respiratory disease
- * Biological exposures
- * Biomarkers of exposure and effect
- * Built environment and health
- * Cancer
- * Cardiovascular diseases
- * Child health
- * Climate change and health
- * Early programming, later life effects
- * Emerging chemicals and health
- * EMF, Mobile phones and health
- * Endocrine disruption
- * Environmental equity
- * Environmental health policy
- * Ethics
- * Exposure assessment of air pollutants
- * Exposure assessment of chemicals
- * Exposure assessment of noise
- * Exposure assessment of radiation
- * Exposure assessment of water contaminants
- * Exposure assessment, methods
- * Exposure measurement error
- * Food, environment and health
- * Genetic susceptibility and environmental health
- * Genetics
- * Green spaces and health
- * Health impact assessment
- * Indoor air and health
- * Infectious diseases
- * Ionising radiation and health
- * Mediterranean environmental health
- * Metals and child health
- * Metals and cognitive function
- * Metals and reproductive outcomes
- * Meteorology and health
- * Methods, general
- * Neurologic diseases
- * Noise
- * Obesity and environmental exposures
- * Occupational health
- * Omics technologies in environmental health research
- * Pesticides and health
- * Pharmaceuticals in the environment
- * POPs, reproductive health and neurodevelopment
- * Respiratory diseases and allergies
- * Socio-economic status, environment and health
- * Soil contamination and health
- * Systematic reviews and meta-analyses
- * Transport and health
- * Ultraviolet radiation and health
- * Urban environment
- * Waste and health
- * Other